

Eagle Eye Rack CMVR

320, 323, 420, 420ai

The Eagle Eye Enterprise Cloud Managed Video Recorders (CMVRs) are designed for IT professionals, providing for the reliability, management, and monitoring capabilities expected in data centers. The CMVR stores video and acts as a gateway from your business to the Eagle Eye Cloud Data Center, where your video can also be stored and managed by the Eagle Eye Cloud VMS. It provides video storage, video buffering, a secure connection, bandwidth management, and monitoring of cameras.

These 1U rack-based CMVRs are designed to fit in standard equipment rack. The rack mount CMVRs are offered in a range of sizes to support larger camera counts. Versions are available with analog camera interfaces to allow direct connection of existing NTSC and PAL cameras. The model 323 also provides integrated POE ports for direct connection of IP cameras.

System administration

- 100% browser-based; no software necessary
- Granular user permissions for enhanced security
- Multisite support to ensure complete coverage across all of your locations
- Point-and-click video sharing for optimized incident communication
- Centralized management provides a single hub to access all of your cameras

Recording features

- Video encrypted in transit and at rest
- Fully cloud managed
- Intelligent Bandwidth Management with local buffering
- Motion or continuous recording
- Optional audio recording

Web interface & mobile features

- Native iOS and Android apps
- View live and recorded video
- Compatible with all modern browsers
- Motion detection with alerts
- Map and floor-plan display



What is the Eagle Eye Cloud VMS?

The Eagle Eye Security Camera VMS is a fully managed cloud video surveillance solution, delivering an end-to-end video management system that's simple to deploy and easy to use. It supports all modern browsers and works on Windows, Mac, even Linux with no plugins to install. With our fully mobile capabilities, you can view video anytime, anywhere. The fully functional iOS and Android applications provide complete access to live and recorded video and can also be used to install, configure and manage the system.

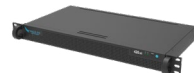
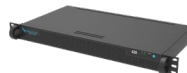
Eagle Eye Networks provides a cloud based, video management system. The Eagle Eye Bridge is installed on site, connects to your cameras, records video locally, and then securely synchronizes both video and metadata to the Eagle Eye Cloud Data center. It's a robust, secure appliance specifically designed to overcome the demands of transmitting high-resolution video through the internet.

Comprehensive camera support

At Eagle Eye Networks we believe camera compatibility is important. There's no need to be locked into a single camera vendor. Businesses need the flexibility to work with the cameras that they choose. Eagle Eye Bridges and CMVRs support ONVIF Profile S IP cameras. Eagle Eye Combo Bridges and CMVRs support IP as well as NTSC and PAL analog cameras. For an up to date list of all compatible cameras visit www.een.com/cameras.

Security simplified

With Eagle Eye Complete Privacy Encryption™, video is fully encrypted during transmission and at rest. The Eagle Eye Bridge has no open ports to the Internet, eliminating security vulnerabilities commonly found in other systems and requiring no router or firewall adjustments.



MODEL	CMVR 320	CMVR 323	CMVR 420	CMVR 420ai
Max Cameras*	Up to 20 IP Cameras @4MP	Up to 20 IP Cameras @4MP	Up to 35 IP Cameras @4MP	Up to 35 IP Cameras @4MP
Max Analytic Count**	5	5	10	20
LPR Support**	No	No	Yes	Yes
Storage Capacity	4 TB (35 days for 20 cameras @ 1MP)	4 TB (35 days for 20 cameras @ 1MP)	16 TB (80 days for 35 cameras @ 1MP)	24 TB (50 days for 35 cameras @ 1MP)
POE Camera Ports	None	8 port, Class 3	None	None
Network Ports	Dual Gigabit	Dual Gigabit	Dual Gigabit	Dual Gigabit
Video Output**	VGA (1), DVI (1)	VGA (1), DVI (1)	VGA (1), HDMI (1), DP (1)	VGA (1), HDMI (1), DP (1)
Dimension	427 x 251 x 45 mm 16.81 x 9.88 x 1.75 in 1U	427 x 251 x 45 mm 16.81 x 9.88 x 1.75 in 1U	427 x 251 x 45 mm 16.81 x 9.88 x 1.75 in 1U	427 x 251 x 45 mm 16.81 x 9.88 x 1.75 in 1U
Weight	3.76 kg 8.3 lbs	3.71 kg 8.17 lbs	4.26 kg 9.4 lbs	4.34 kg 9.55 lbs
Maximum Power Consumption	Internal 100-240 VAC, 65 W	Internal 100-240 VAC, 65 W	Internal 100-240 VAC, 50 W	Internal 100-240 VAC, 130 W
Operating Temperature Range	0-35° C 32-95° F	0-35° C 32-95° F	0-35° C 32-95° F	0-35° C 32-95° F
Operating Humidity Range	0-70%	0-70%	0-70%	0-70%
Certifications	FCC, UL, PSE, CE, CCC (S&E), BIS	FCC, UL, PSE, CE, CCC (S&E), BIS	FCC, UL, PSE, CE, CCC (S&E), BIS	FCC, UL, PSE, CE, CCC (S&E), BIS
Eagle Eye Rapid Replacement Part Numbers	EN-RR320-1 (Monthly) EN-RR320-12 (Yearly)	EN-RR323-1 (Monthly) EN-RR323-12 (Yearly)	EN-RR420-1 (Monthly) EN-RR420-12 (Yearly)	EN-RR420ai-1 (Monthly) EN-RR420ai-12 (Yearly)

* Typical - please utilize the Eagle Eye VMS Bridge Wizard for precise capacity. ** If using LPR, see the Eagle Eye License Plate Recognition Data Sheet for all bridge specs.

Network features

- Automatic network configuration
- Secure camera network (dual network ports)
- No inbound connections needed
- Packet loss detection/reporting
- Network disconnected alerts

Management features

- Remote management
- Automatic camera discovery
- Automatic camera configuration
- Advanced motion detection
- Local video buffering
- Configuration synced to Cloud
- Camera trouble alerts
- Internet outage alerts
- Fully cloud managed

Standard Support

(Included)

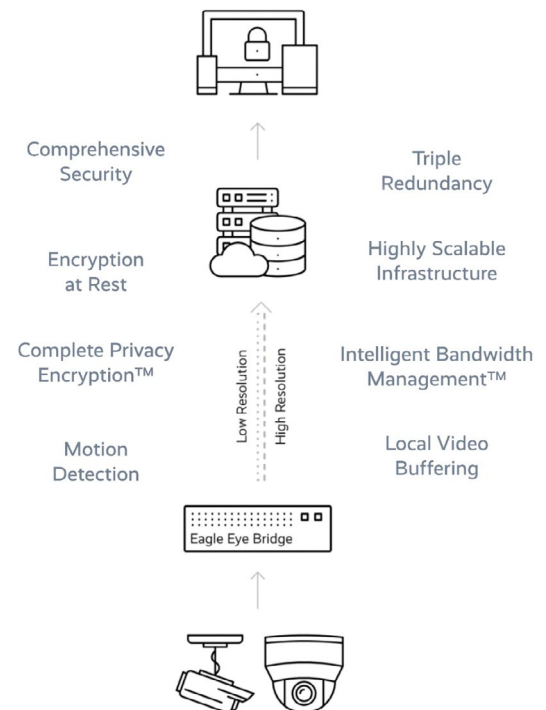
- Free of charge with an active subscription
- Bridge - no cost replacement, CMVR - 2 year warranty
- 24/7 email and web support
- 8 am to 6 pm phone support

Eagle Eye Rapid Replacement and Extended Warranty

(Recommended)

Eagle Eye's comprehensive program for hardware warranty and upgrades.

- Extends warranty up to 20 years
- Full equipment upgrade every 6 years upon request
- 24/7 priority support via phone, email, and web
- Overnight cross shipping of warranty replacement if needed



LEARN MORE
Visit our website
[EEN.COM](https://www.een.com)

UNITED STATES
+1-512-473-0500
sales@een.com

LATIN AMERICA/CARIBBEAN
+52 55 8526 4926
LATAMsales@een.com

EUROPE
+31 20 26 10 460
EMEAsales@een.com

ASIA-PACIFIC
+81-3-6868-5527
APACsales@een.com