



DIRECT-TO-CLOUD SURVEILLANCE

Eagle Eye Bridge Cabinet System Data Sheet

Add up to 7 cameras, AI analytics, LPR, and more beyond your network's edge.



Key features:



AI alerts and functionality:

Get analytics and other features to monitor intrusion, loitering, vehicle activity, and more.



License Plate

Recognition (LPR): Use AI to read license plates so you can know what cars are present, when, and how often.



Location flexibility:

Connect cameras to the Cloud VMS in any location without a network connection.



Weather resistance:

Protect your system in a rugged enclosure to survive a wide range of environmental conditions.

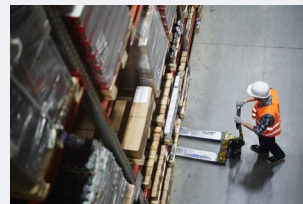
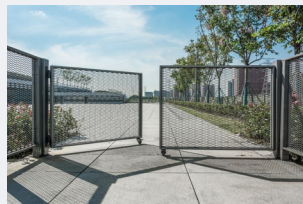


Reduced installation costs:

Eliminates the need for trenching and wiring, which can save thousands of dollars.

Connect multiple cameras to the Eagle Eye Cloud VMS without any wires.

Now there's a solution for customers who need video surveillance without an accessible wired network connection. Eagle Eye Bridge Cabinet Systems connect directly to the Eagle Eye Cloud VMS with an included cellular connection. This outdoor solution also includes an Eagle Eye Bridge or CMVR to connect up to seven cameras and perform license plate recognition (LPR).



APPLICATIONS FOR EAGLE EYE BRIDGE CABINET SYSTEMS

Add security in perimeter locations where wired internet access is not feasible, including access gates. Curb illegal dumping, theft, and other criminal behavior.

- Recreation: Parks and other outdoor facilities
- Construction: Site surveillance and perimeter security
- Property Management: Parking lots, gates, dumpsters, and HOAs
- Farming and cannabis production: Fields, greenhouses, and equipment storage
- Parking: Perimeter area observation and LPR-enabled gate control
- Industrial: Power infrastructure, oil and gas, water treatment facilities
- Commercial: Warehouses and lots, equipment/fleet parking

Part numbers:

Only available in the United States.

EN-SS100	Eagle Eye Bridge/CMVR Cabinet 8POE (Outdoor rated, for Compact Bridge/CMVR, Cooling Fan, Industrial Power Supplies)
EN-SS100wc	Eagle Eye CMVR Cabinet Cellular 8POE (Outdoor rated, for Compact Bridge/CMVR, Cooling Fan, Industrial Power Supplies, and Cellular Modem)
EN-SS100wc-324+	Eagle Eye CMVR Cabinet SS324+ Cellular 8POE (324+, Outdoor rated, Cooling Fan, Industrial Power Supplies, and Cellular Modem)
EN-SS100wc-524+	Eagle Eye CMVR Cabinet SS524+ Cellular 8POE (324+, Outdoor rated, Cooling Fan, Industrial Power Supplies, and Cellular Modem)
EN-M40-1	Eagle Eye VMS M40 Cellular Modem MM01 Management Monthly
EN-DPMM-001-1	Eagle Eye Cellular Modem Data Plan NA U001 for MM01 Monthly

System specifications:

MODEL	SS100wc
Connectivity	Wifi or 4G LTE (TMobile)
Data Plan	Unlimited data plan offered by Eagle Eye Networks Upload limited to 2 mps/second
Maximum Power	240 Watts
Cabinet Dimensions	24 x 16 x 8.25 in 610 x 407 x 210 mm
Operating Temperature	Warning: Do not operate the 324+ and 524+ below freezing temperatures. Damage may occur.
Cabinet Weight	34.1 lbs (15.5 kg)
Ingress Protection	IP 65
Mounting Accessories	Includes cabinet and mounting brackets with flexible steel pole clamps (990mm)



All Cabinet Systems are available as Eagle Eye Complete subscriptions

Eagle Eye Complete subscriptions eliminate upfront capital costs and include Lifetime Repair and Replace. Bundle all you need and gain peace of mind with an Eagle Eye Complete subscription. Complete subscriptions include all needed hardware, the cellular modem management subscription (M40), and cellular modem data plan subscription (DPMM-001). Camera subscriptions are not included.

EN-CSS100wc-324p-0

Eagle Eye CMVR Cabinet Complete
CSS324+ Cellular 8POE
(Outdoor rated, Cooling fan, IP65)
Setup

EN-CSS100wc-324p-1

Eagle Eye CMVR Cabinet Complete
CSS324+ Cellular 8POE
(Outdoor rated, Cooling fan, IP65)
Monthly w/Year Commit

EN-CSS100wcl-524p-0

Eagle Eye CMVR Cabinet Complete
LPR CSS524+ Cellular 8POE
(Outdoor rated, Cooling fan, IP65)
Setup

EN-CSS100wcl-524p-1

Eagle Eye CMVR Cabinet Complete
LPR CSS524+ Cellular 8POE
(Outdoor rated, Cooling fan, IP65)
Monthly w/Year Commit

LEARN MORE
Visit our website
EEN.COM

UNITED STATES
+1-512-473-0500
sales@een.com

LATIN AMERICA/CARIBBEAN
+52 55 8526 4926
LATAMsales@een.com

EUROPE
+31 20 26 10 460
EMEAsales@een.com

ASIA-PACIFIC
+81-3-6868-5527
APACsales@een.com